

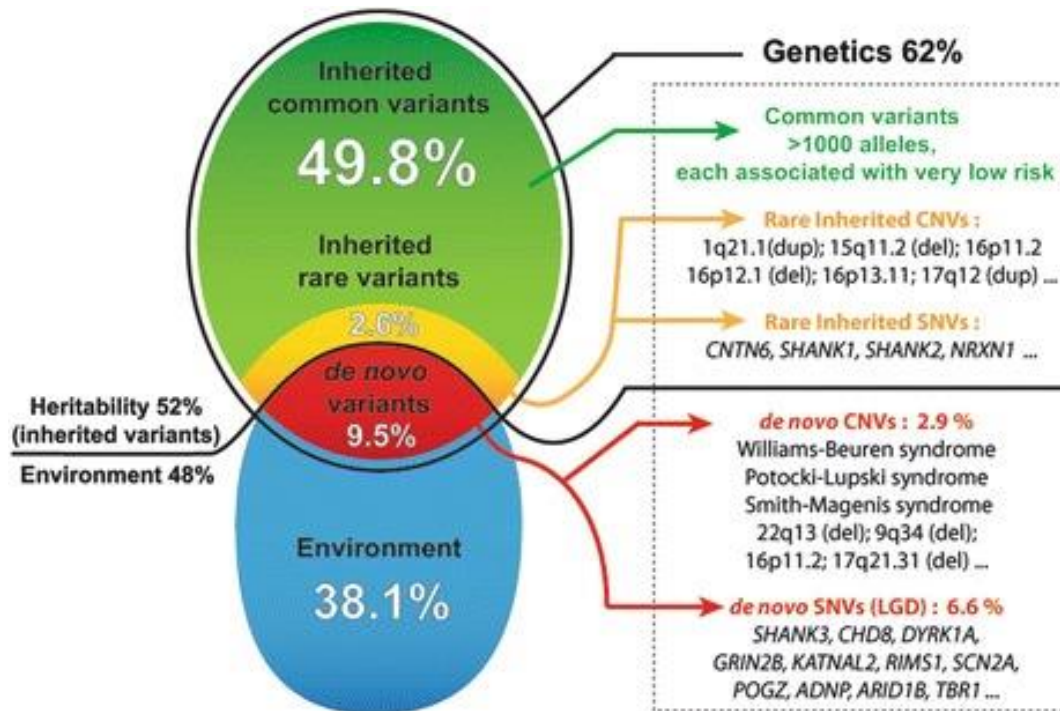
# Deep phenotyping of social behavior in animal models of ASD

*Shlomo Wagner*

*Sagol Department of Neurobiology, University of Haifa*

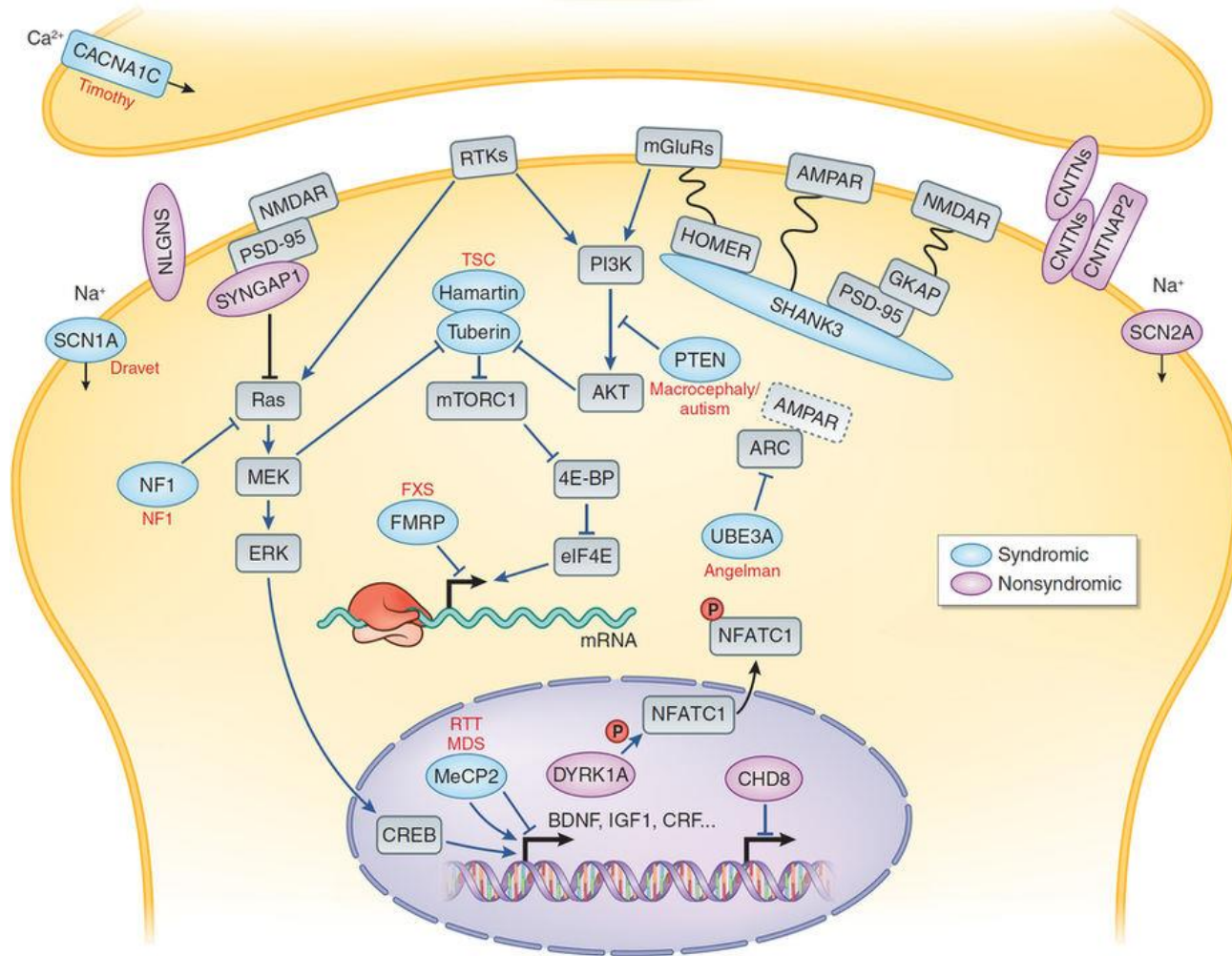


# Autism genetics



Adopted from: **The Genetics of Autism Spectrum Disorders**  
Guillaume Huguet, Marion Benabou, and Thomas Bourgeron.  
In: A Time for Metabolism and Hormones [Internet].  
Sassone-Corsi P, Christen Y, editors. Cham (CH): Springer; 2016.

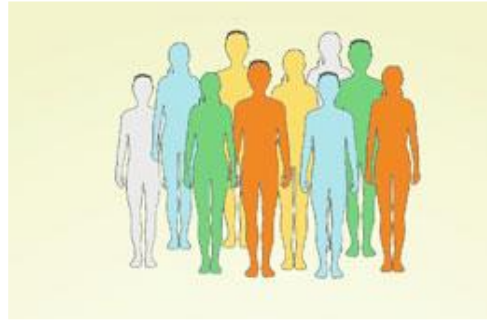
# Syndromic ASD



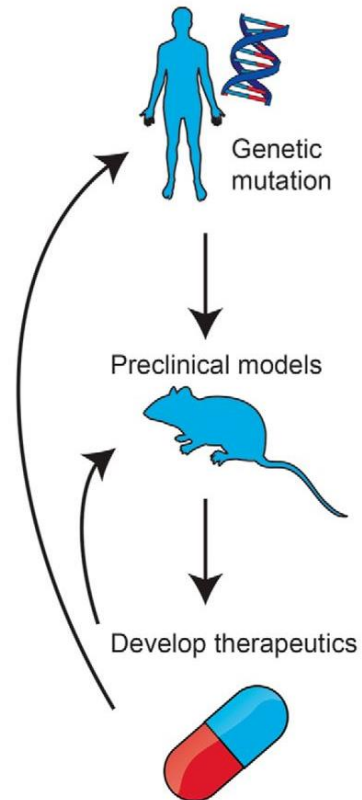
Adopted from: Lessons learned from studying syndromic autism spectrum disorders, Yehezkel Szteinberg & Huda Y. Zoghbi, *Nature Neuroscience* **19**, 1408–1417 (2016)

# The problem with CNVs

Small cohorts, high heterogeneity



## Personalized medicine

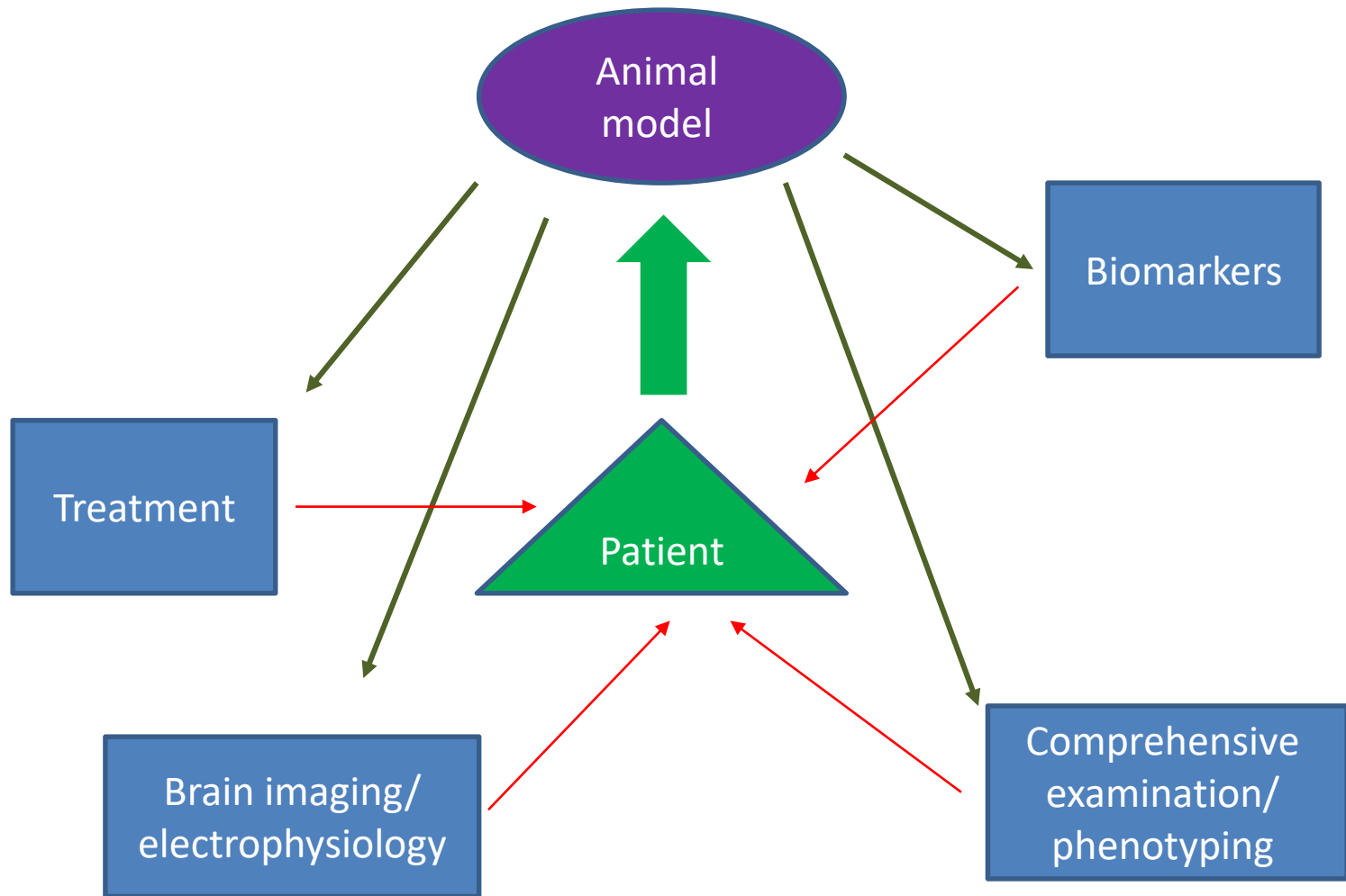


## Animal models of rare CNVs

Homogeneous, large population of animals carrying the CNV or part of it

*and they actually behave*

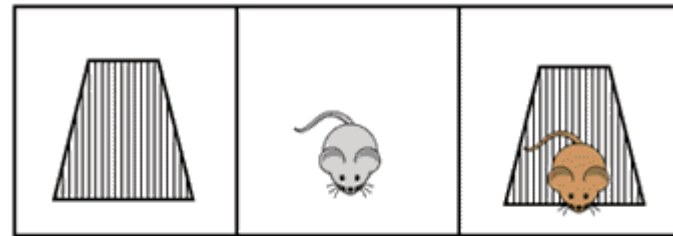
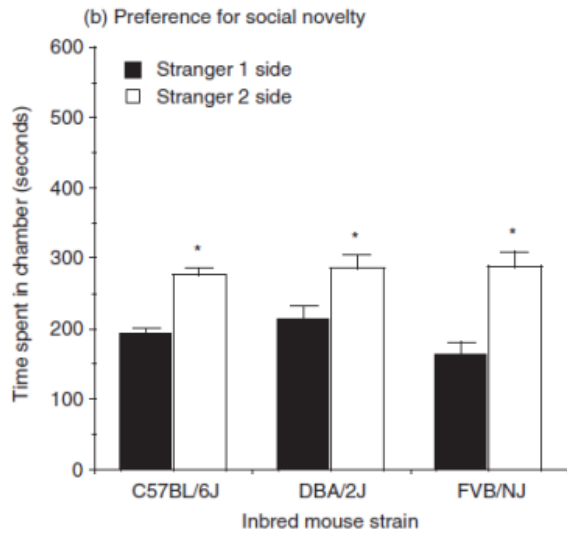
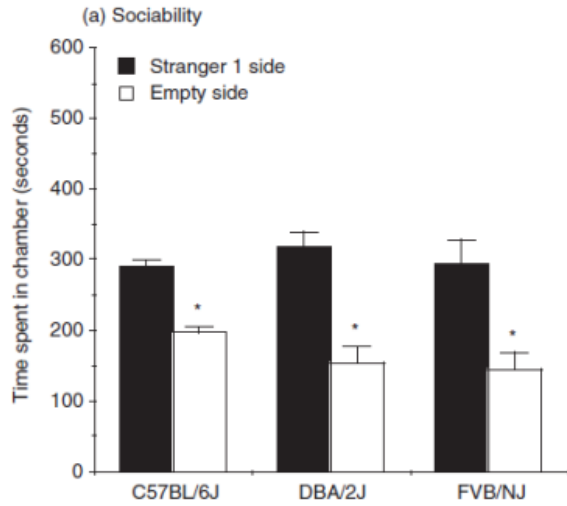




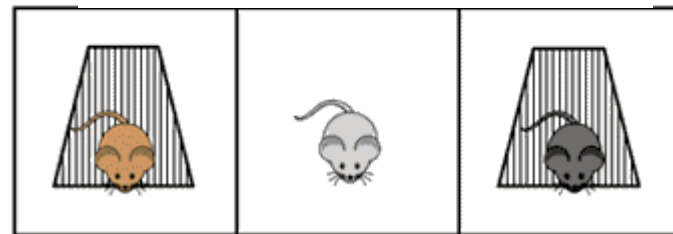
## Behavioral phenotyping of social behavior in animal models



# The three-chamber test



Social preference (sociability)

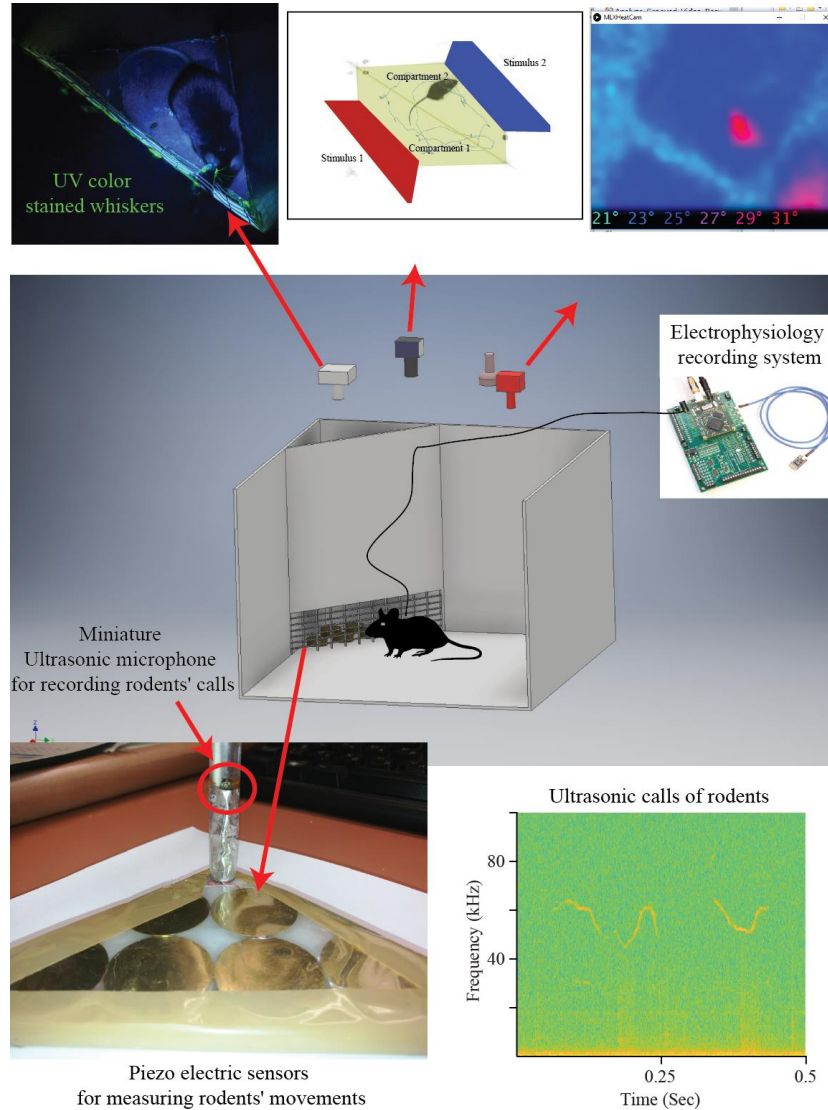


Social novelty preference

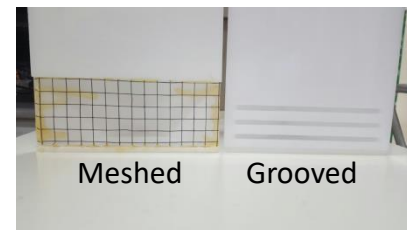
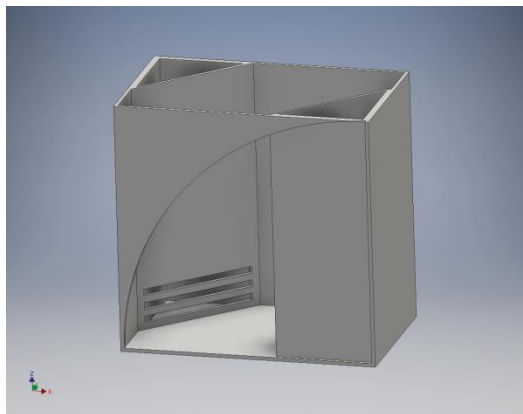
Adapted from Moy *et al.* Genes, Brain and Behavior (2004) 3: 287–302



# Towards deep phenotyping of social behavior in animal models



# TrackRodent: A novel system for tracking social behavioral dynamics



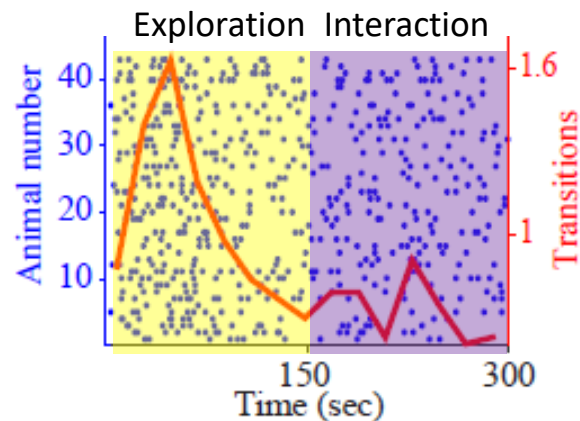
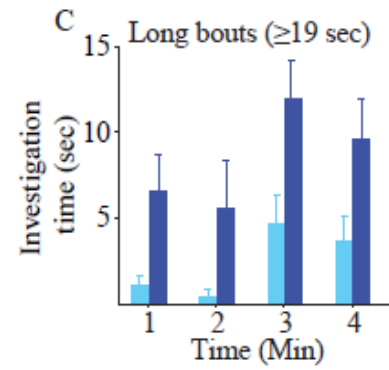
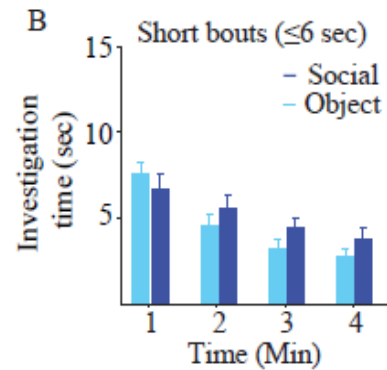
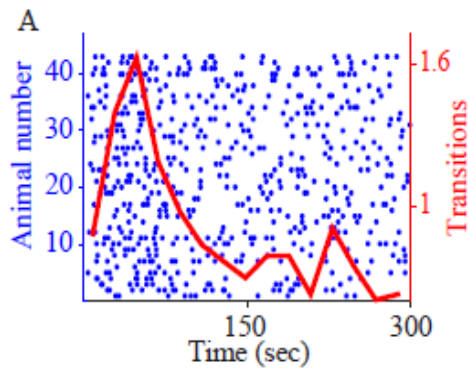
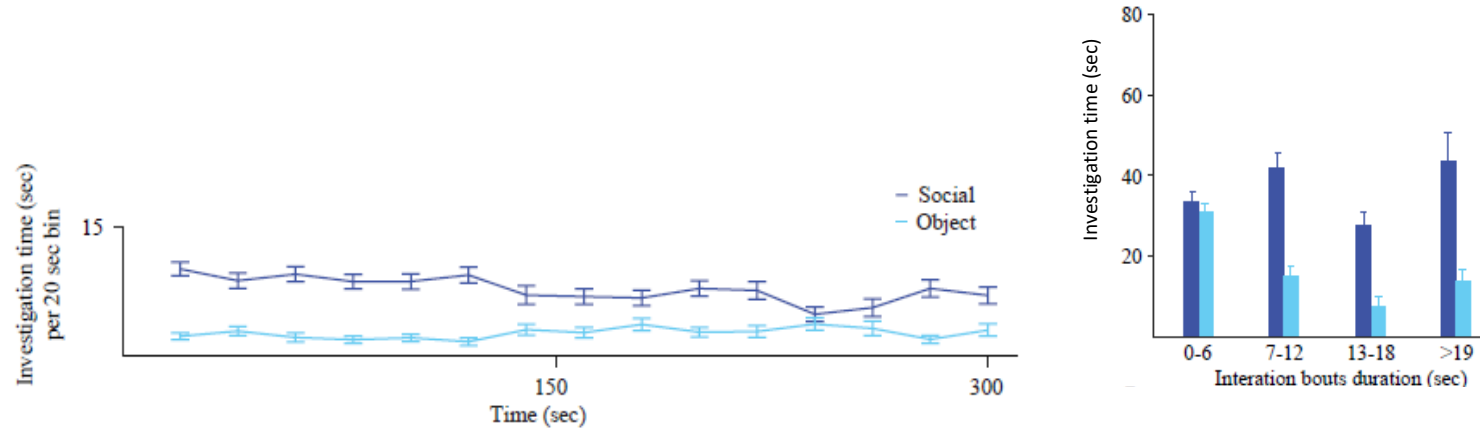
Eng. Alex Bizer



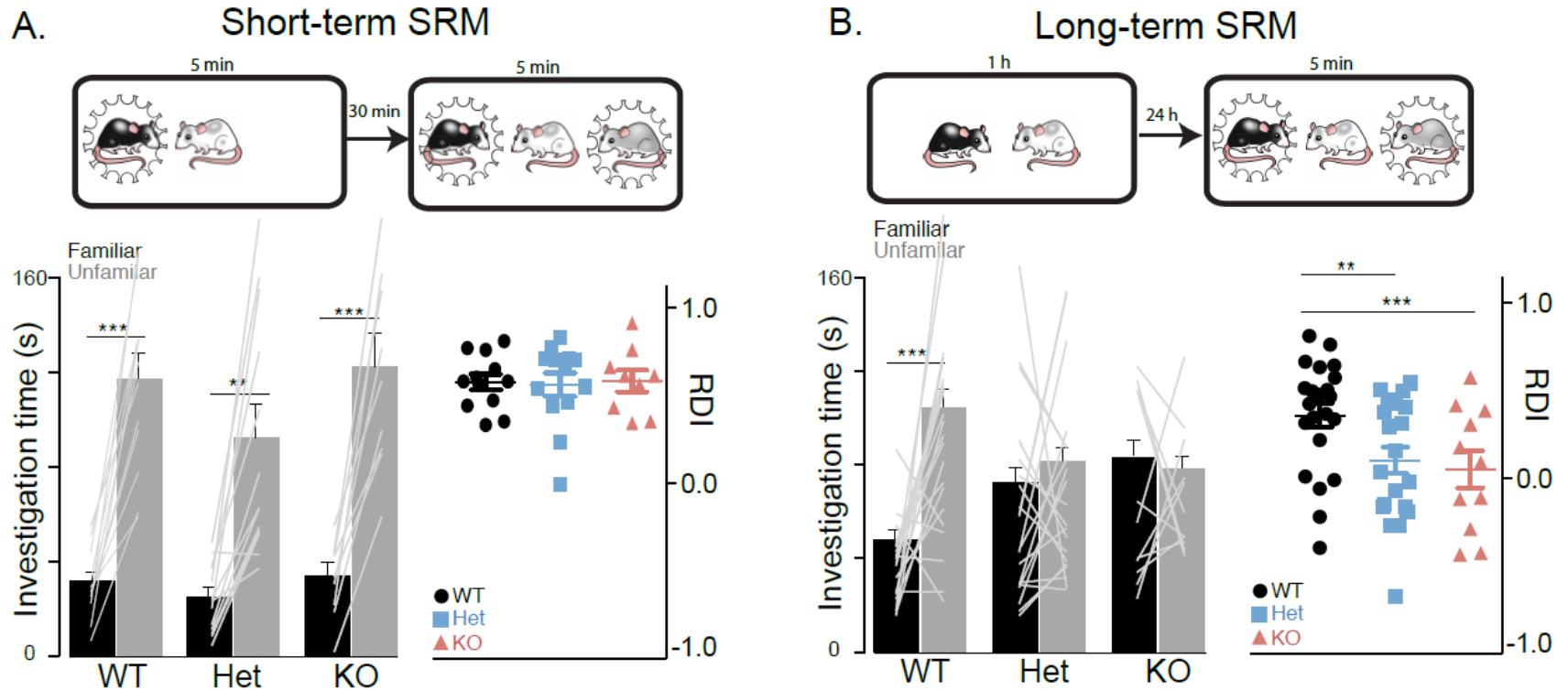
Dr. Shai Netser



# Social preference dynamics in C57BL/6J mice



# Shank3-deficient rats display a specific loss of long-term social recognition memory (SRM)



# Experimental design

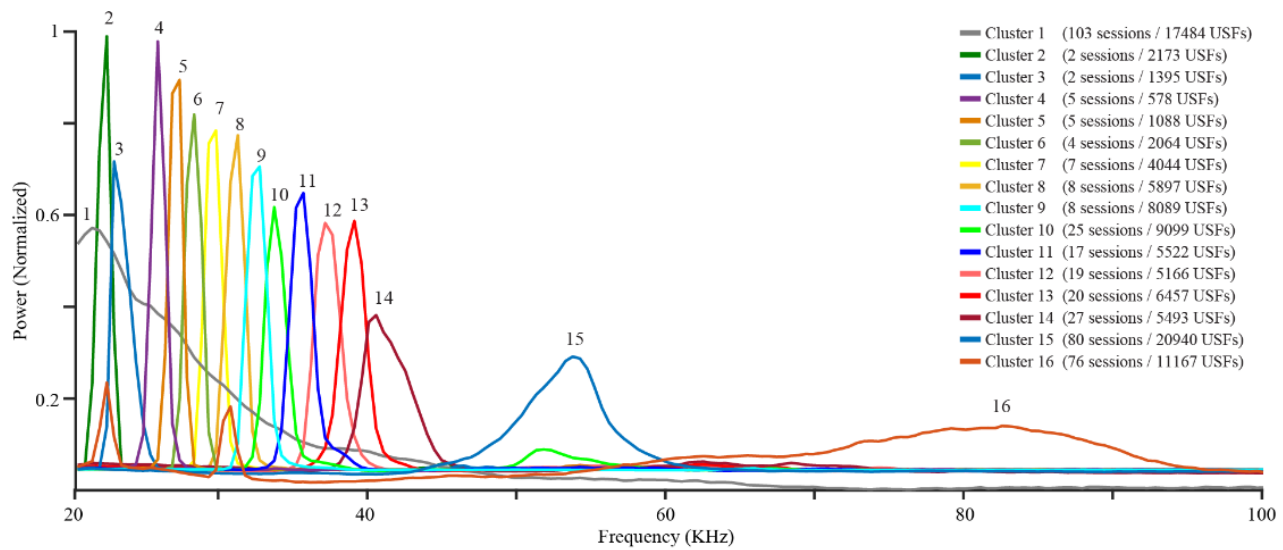
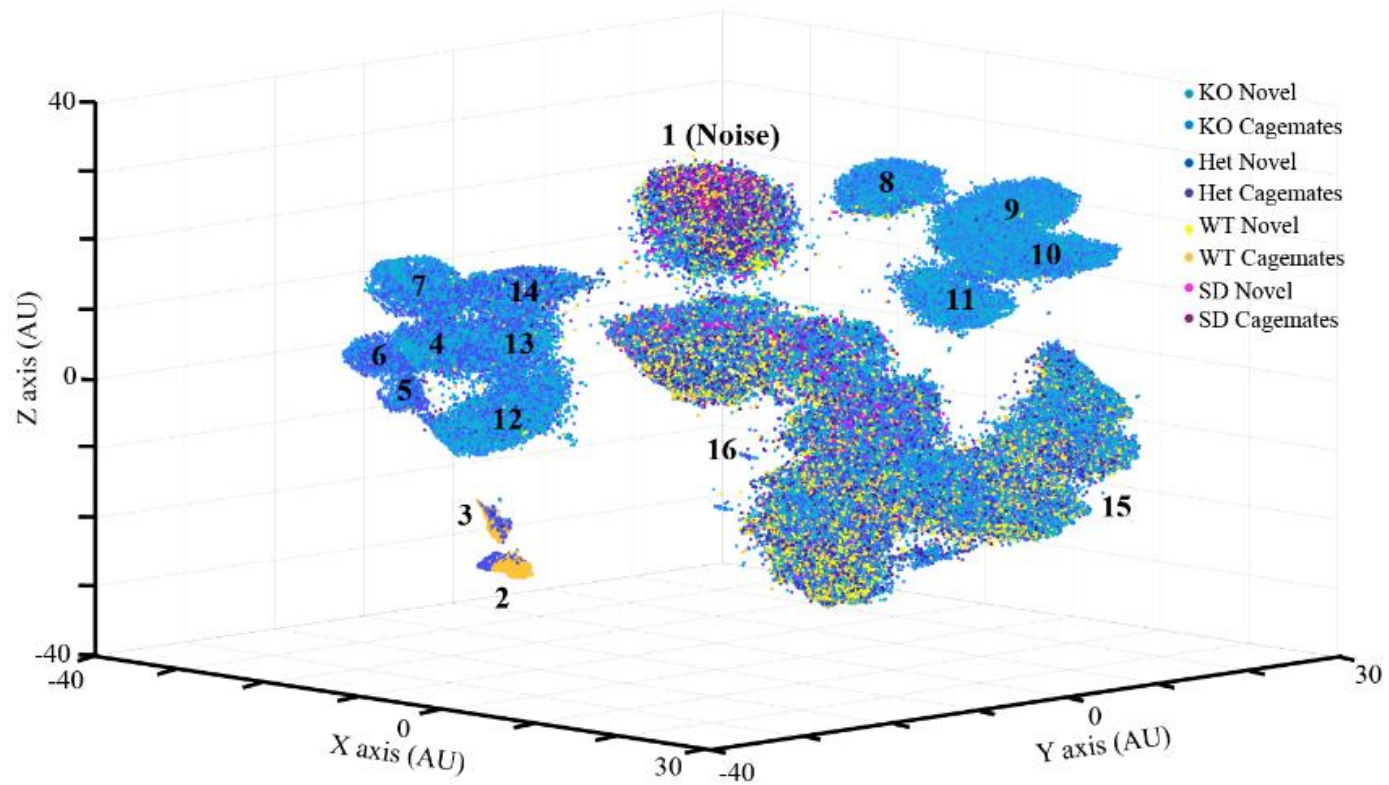
Dyadic interactions of animals, each pair of a distinct genotype, all males

Each genotype was tested with either familiar or unfamiliar partners

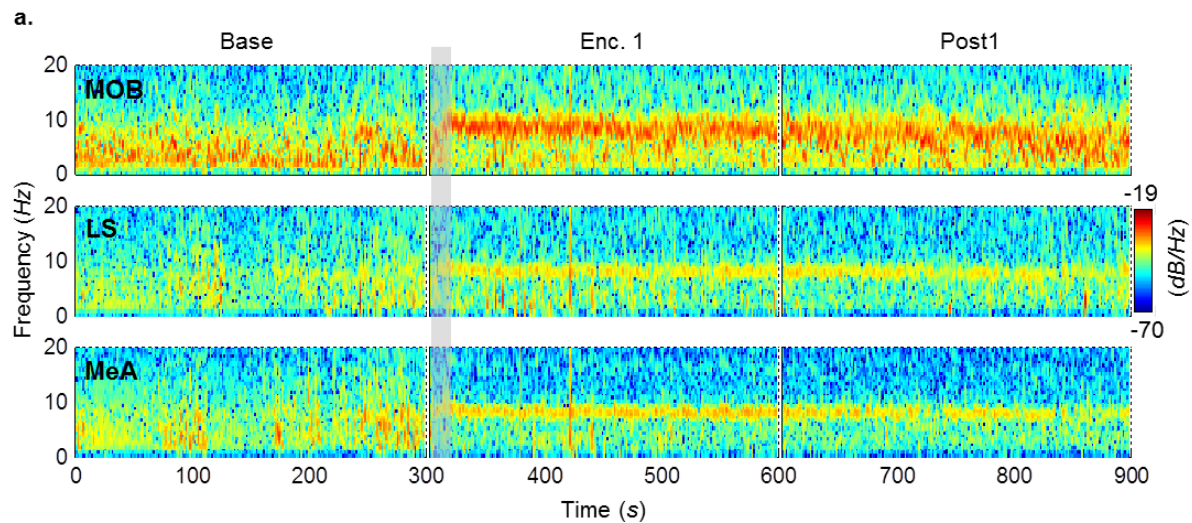
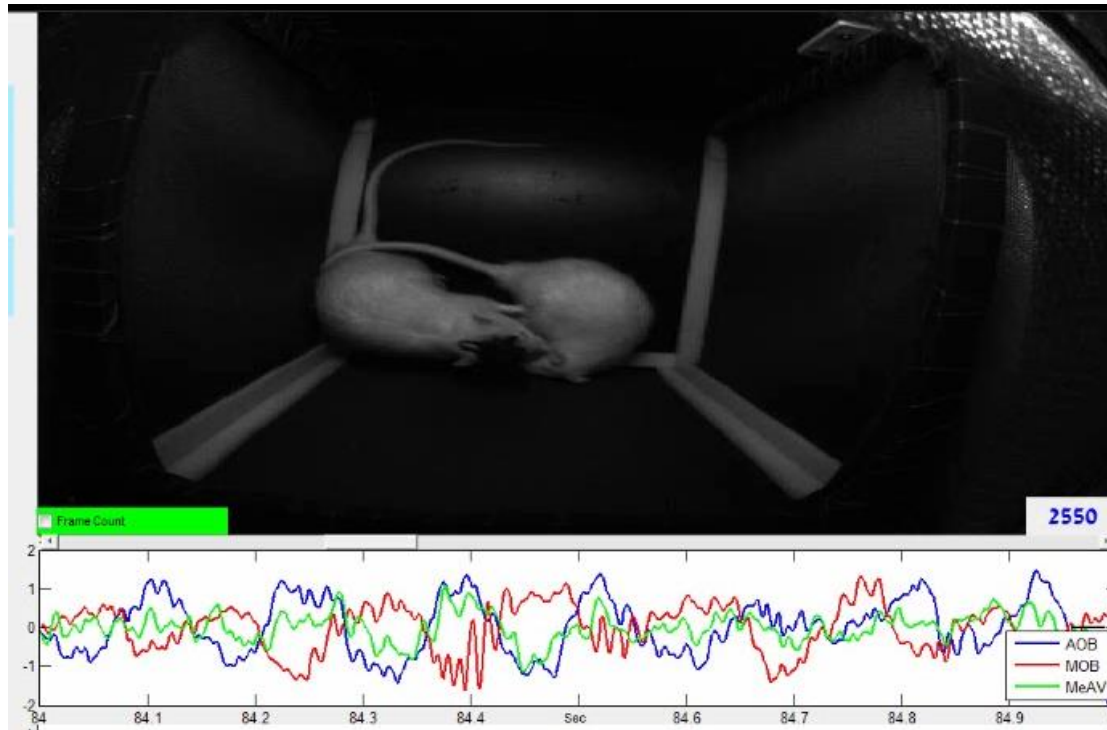
## 4 genotypes (fam/unfam)

- SD rats (10/10)
- *Shank3*<sup>+/+</sup> (8/14)
- *Shank3*<sup>+/-</sup> (22/22)
- *Shank3*<sup>-/-</sup> (10/13)



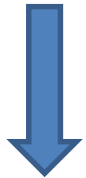


# Theta rhythmicity as a correlate of social arousal



# Vision

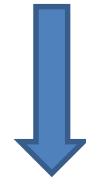
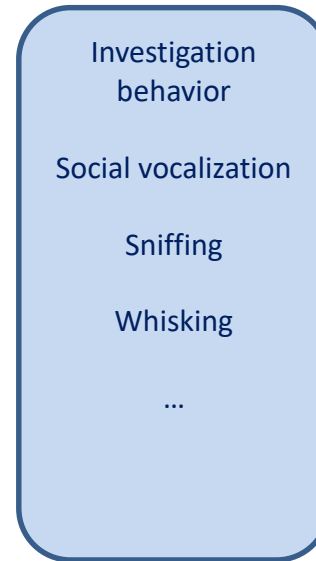
## Multiple animal models



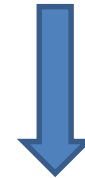
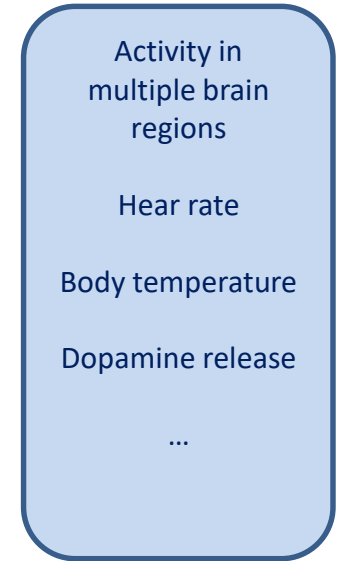
## Multiple behavioral assays



## Multiple measurements



## Physiological parameters



- Detailed analysis of deficits in social behavior, including its dynamics, correlated with changes in the emotional state of the animals and neural activity in the social brain.
- Detection and characterization of impaired mechanisms at the system level.
- Examination, in collaboration with other laboratories and companies, of various interventions which target the suspected mechanisms and aim to alleviate observed deficits



